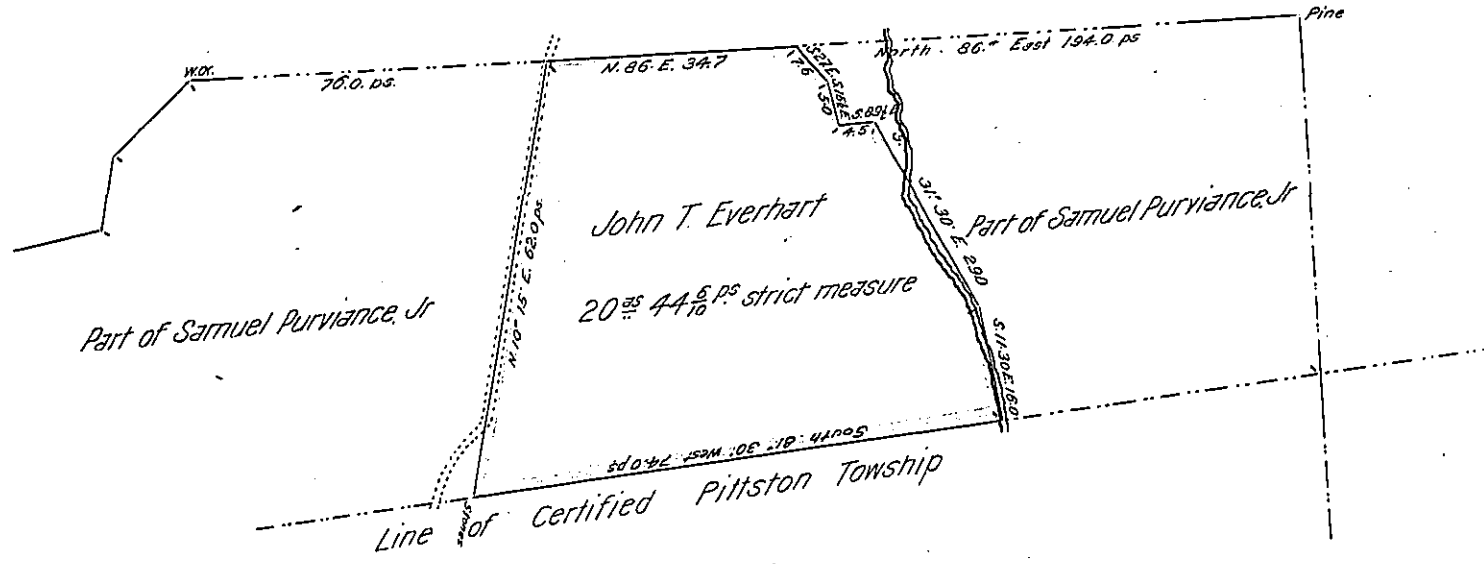


Andrew Henderson Warrant dated 1st. of July. A.D. 1784.



Luzerne

Draft of a tract of land, situate in Old Forge township, in the County of Luzerne, containing 20²⁵/₁₀₀ 44⁵/₁₀₀ strict measure. Surveyed for John T. Everhart the 16th day of October A.D. 1873, being a part of a larger tract of 2083²⁵/₁₀₀ 85²⁵/₁₀₀ & allowance; originally surveyed in pursuance of a warrant granted to Samuel Purviance Jun dated the 4th day of February A.D. 1769.

To Hon. Robert B. Beath
Surveyor General

J. P. Weller,
County Surveyor for
Luzerne County

IN TESTIMONY that the above is a copy of the original remaining on file in the Department of Internal Affairs of Pennsylvania, made conformably to an Act of Assembly approved the 16th day of February, 1833, I have hereunto set my Hand and caused the Seal of said Department to be affixed at Harrisburg, this

nineteenth day of December 1905.

Seaman
Secretary of Internal Affairs.